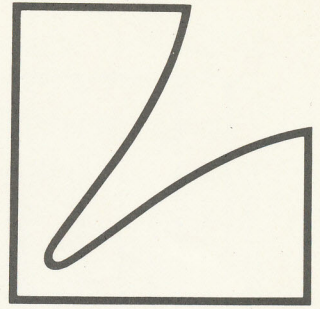


# SERVICE MANUAL

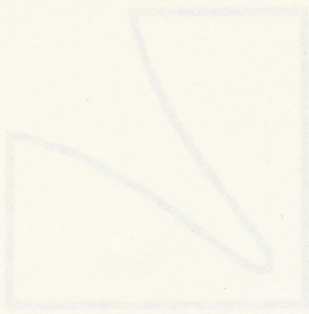


LUXMAN STEREO CASSETTE DECK

**K-115**

[www.luxmanaudio.com](http://www.luxmanaudio.com)





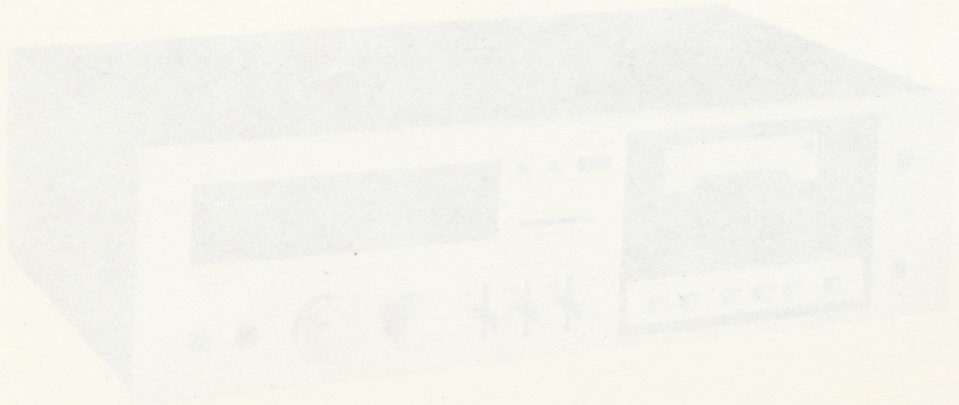
# SERVICE MANUAL

## K-115

### LUXMAN STEREO CASSETTE DECK

WILSON

HARLINGEN  
TEL 0515-605

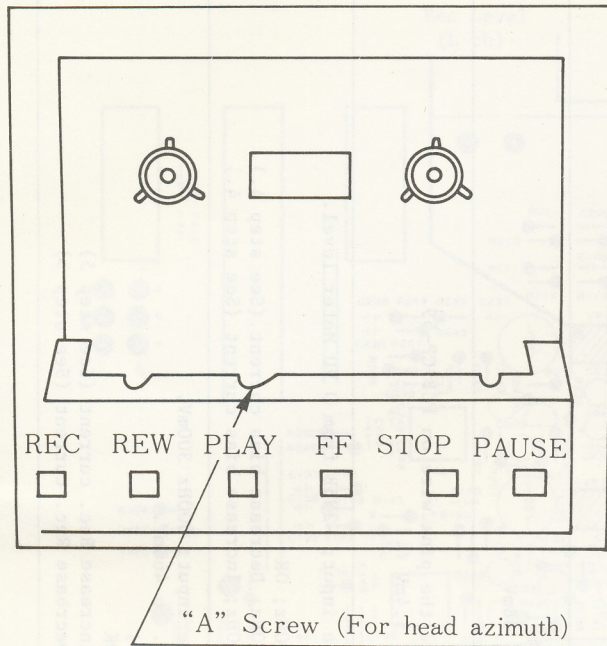


LUX CORPORATION, JAPAN

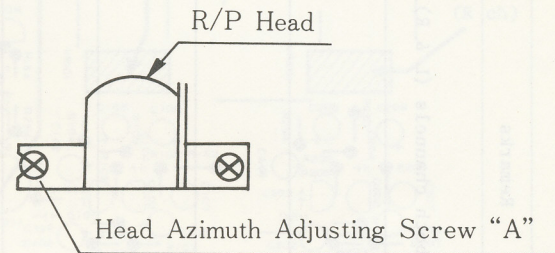
1-1-1 HONCHO, SHINJUKU-KU, TOKYO 162, JAPAN

# Head Azimuth Adjustment

(Fig. 1)

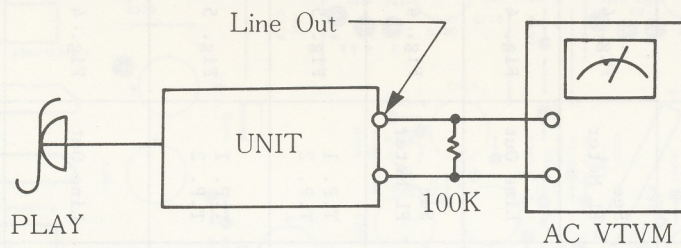


(Fig. 2)

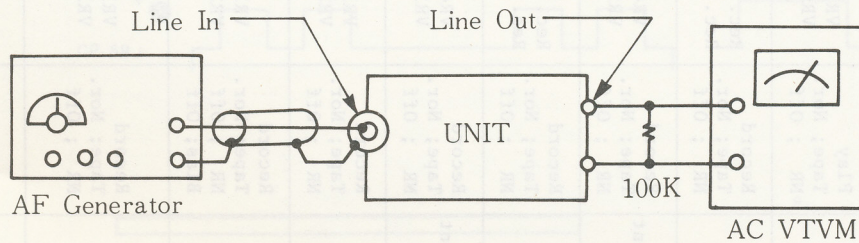


# Connections for Alignment

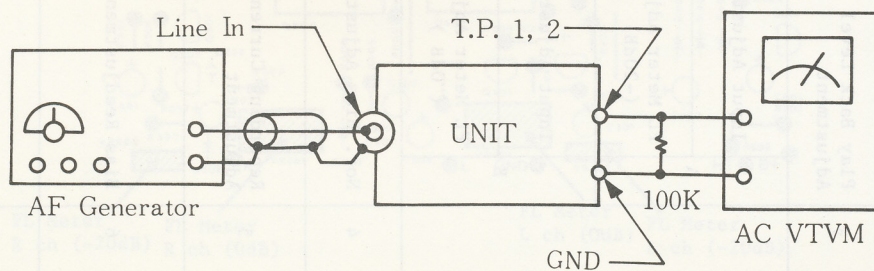
(Fig. 3)



(Fig. 4)

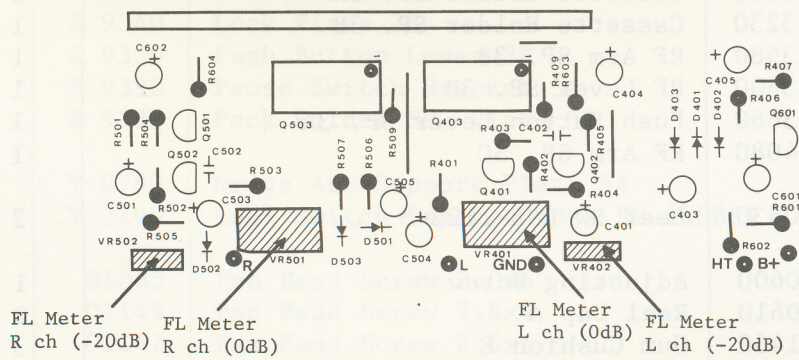
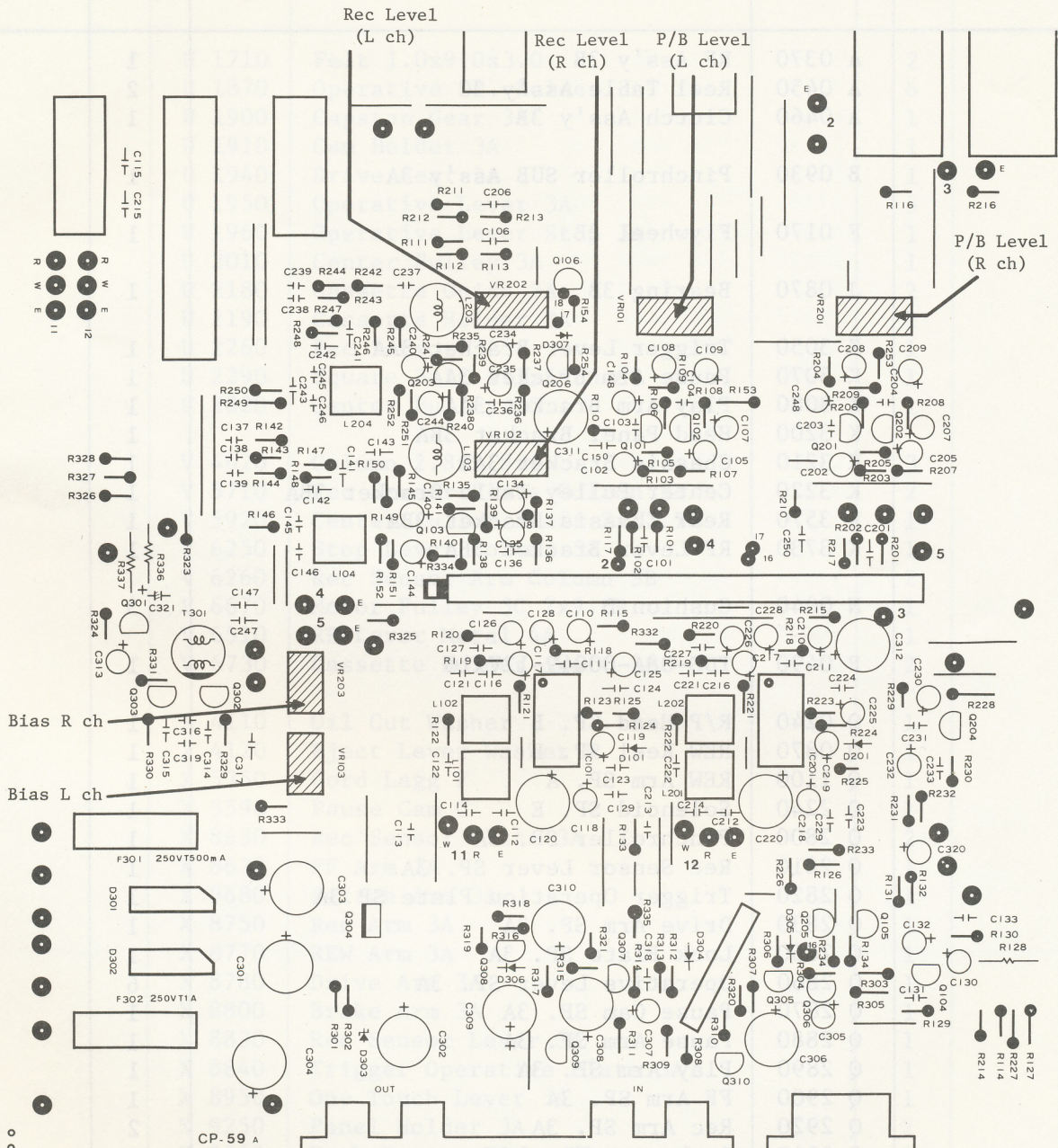


(Fig. 5)



Step	Description	Switch Mode	Adjust. Point	Test Point	Connection Instruction	Remarks
1	Head Azimuth Adjustment	Play Tape; Nor. NR ; Off	"A" Screw	Line Out	Fig. 1,2,3	Test Tape ; MTT-114 T.P. Output; Maximum of both channels (L & R)
2	Play Back Level Adjustment	Play Tape; Nor. NR ; Off	VR101 VR201	Line Out	Fig. 3	Tape ; MTT-150 T.P. Output; 460mV
3	Input Adjustment	Record Tape; Nor. NR ; Off	Rec. VR.L Rec. VR.R	Line Out	Fig. 4	Line Input ; 400Hz 30mV T.P. Output; 46mV
	FL Meter Adjustment (-20dB)	Record Tape; Nor. NR ; Off	VR402 VR502	See FL Meter	Fig. 4	Line Input ; 400Hz 30mV Adjust for -20dB
4	Input Adjustment	Record Tape; Nor. NR ; Off	Rec. VR.L Rec. VR.R	Line Out	Fig. 4	Line Input ; 400Hz 300mV T.P. Output; 460mV
	FL Meter Adjustment ( 0dB )	Record Tape; Nor. NR ; Off	VR401 VR501	See FL Meter	Fig. 4	Line Input ; 400Hz 300mV Adjust for 0dB
4	Nor. Bias Adjustment	Record Tape; Nor. NR ; Off	VR103 VR203	T.P. 1 T.P. 2	Fig. 5	Input ; Non Adjust level to 38mV
5	Recording Current Adjustment	Record Tape; Nor. NR ; Off Bias; Off	VR102 VR202	T.P. 1 T.P. 2	Fig. 5	Bias Off; Remove the pink wire on PCB CP-59. Adjust level to 5.4mV
6	Bias Readjustment	Record Tape; Nor. NR ; Off	VR103 VR203	Line Out	Fig. 4	Test signal line input; -23dB from 0 VU Meter level. Recording level; 15KHz = 400Hz; OK 15KHz < 400Hz; Decrease bias current (See step 4.) 15KHz > 400Hz; Increase bias current (See step 4.)
7	Recording Current Readjustment	Record Tape; Nor. NR ; Off	VR102 VR202	Line Out	Fig. 4	Test signal line input; 400Hz 300mV. Set the Rec. VR. to 460mV. Recording level; = 400mV; OK < 400mV; Increase Rec. current (See step 5) > 400mV; Decrease Rec. current (See step 5)

# Adjustment Locations



# Replacement Parts List

## Exploded View

SYMBOL NO.	PART NO.	DESCRIPTION	Q'TY
	A 0370	RF Ass'y 3B	1
	A 0450	Reel Table Ass'y 3C	2
	A 0460	Clutch Ass'y 3B	1
	B 0930	Pinchroller SUB Ass'y 3A	1
	F 0170	Flywheel 3B	1
	J 0870	Bearing 3B	1
	K 3050	Trigger Lever Bracket 3AA	1
	K 3070	Pause Arm Bracket 3AA	1
	K 3080	Play Arm Bracket 3AA	1
	K 3200	Head Panel Bracket 3BA	1
	K 3210	Chassis Bracket 3AB	1
	K 3220	Center Pulley Table Bracket 3BA	1
	K 3570	Rear Chassis Bracket 3BA	1
	K 3730	RF Lever Bracket 3BA	1
	N 0040	Cushion D	3
	P 0490	TDS-08A-00049-12Vx10	1
	Q 0240	R/P Head SP. B	1
	Q 0870	REW Reel SP. B	1
	Q 1100	REW Arm SP. A	1
	Q 2240	Solenoid SP. E	1
	Q 2800	Pinchroller SP. 3A	1
	Q 2810	Rec Sensor Lever SP. 3A	1
	Q 2820	Trigger Operation Plate SP 3A	1
	Q 2830	Drive Arm SP. 3A	1
	Q 2850	Lock Plate SP. 3A	1
	Q 2860	Operative Lever SP. 3A	6
	Q 2870	Pause Cam SP. 3A	1
	Q 2880	Pause Arm SP. 3A	1
	Q 2890	Play Arm SP. 3A	1
	Q 2900	FF Arm SP. 3A	1
	Q 2920	Rec Arm SP. 3A	2
	Q 2940	Brake Arm SP. 3A	1
	Q 2950	Switch Arm SP. 3A	1
	Q 3150	Head Panel SP. 3A	1
	Q 3170	Clutch Arm SP. 3A	1
	Q 3220	Cassette Holder SP. 3A	1
	Q 3230	Cassette Holder SP. 3B	1
	Q 3580	RF Arm SP. 3B	1
	Q 3600	RF Lever SP. 3B	1
	Q 3660	Push Button Lever SP. 3A	1
	Q 4080	RF Arm SP. 3C	1
	S 0530	Leaf SW LSB-1123-5	2
	U 0600	Adjusting Screw	1
	U 0610	Reel Cap A	2
	U 1450	Gum Cushion E	3
	U 1470	Flat Belt 73x4.0x0.4-60	1

Adjustment Locations

# Exploded View

SYMBOL NO.	PART NO.	DESCRIPTION	Q'TY
	U 1710	Felt 1.0x9.0x3.0	2
	U 1870	Operative SP. Holder 3A	6
	U 1900	Capstan Gear 3A	1
	U 1910	Cam Holder 3A	1
	U 1940	Drive Gear 3A	1
	U 1950	Operative Lever 3A	5
	U 1960	Operative Lever Stop 3A	1
	U 2010	Center Pulley 3A	1
	U 2180	Cassette Guide 3A	2
	U 2190	Cassette Holder 3A	2
	U 2260	Rec Sensor 3A	1
	U 2290	Square Belt 1.1x59.0-60	1
	U 2820	Center Pulley 3G	1
	V 4620	Column 2.8x3.8x6	3
	V 5710	Rec Sensor Plate Column 3A	2
	V 5920	Center Pulley Shaft 2x13.7	1
	V 6250	Stop Lever Column 3A	1
	V 6260	Rec Sensor Arm Column 3B	2
	V 6670	Motor Pulley 3C 2x9.8R	1
	V 6510	RF Lever Metal 4A	1
	V 6730	Cassette Holder Shaft 3B	2
	X 4110	Oil Cut Washer	1
	X 4120	Eject Lever Washer K	1
	X 5350	Cord Lagg F	1
	X 5590	Pause Cam C	1
	X 8630	Rec Sensor Plate 3A	2
	X 8670	FF Arm 3A	1
	X 8680	Switch Arm 3A	1
	X 8750	Rec Arm 3A	1
	X 8770	REW Arm 3A	1
	X 8780	Drive Arm 3A	1
	X 8800	Brake Arm 3A	1
	X 8830	Rec Sensor Lever 3A	1
	X 8840	Trigger Operative Plate 3A	1
	X 8950	One Touch Lever 3A	1
	X 9250	Panel Holder 3A	2
	X 9260	Push Button Flame 3B	1
	X 9270	Rec Switch Bracket 3A	1
	X 9310	Stop Lever Holder 3A	1
	X 9320	Stop Lever 3A	1
	X 9330	Rec Sensor Arm 3C	1
	X 9340	Lock Plate 3B	1
	X 9350	Push Button Lever 3B	6
	X 9390	Pause Switch Bracket 3A	1
	X 9380	Pack Holder SP. Plate 3B	1
	Y 0780	Drive Arm Support Plate 3A	1
	Y 2290	Leaf Switch Bracket (SD) SN-240861	1
	01085	Pan Head Screw 2.0x4	1
	01145	Pan Head Screw 2.6x4	2
	01147	Pan Head Screw 2.6x6	2
	01149	Pan Head Screw 2.6x8	3

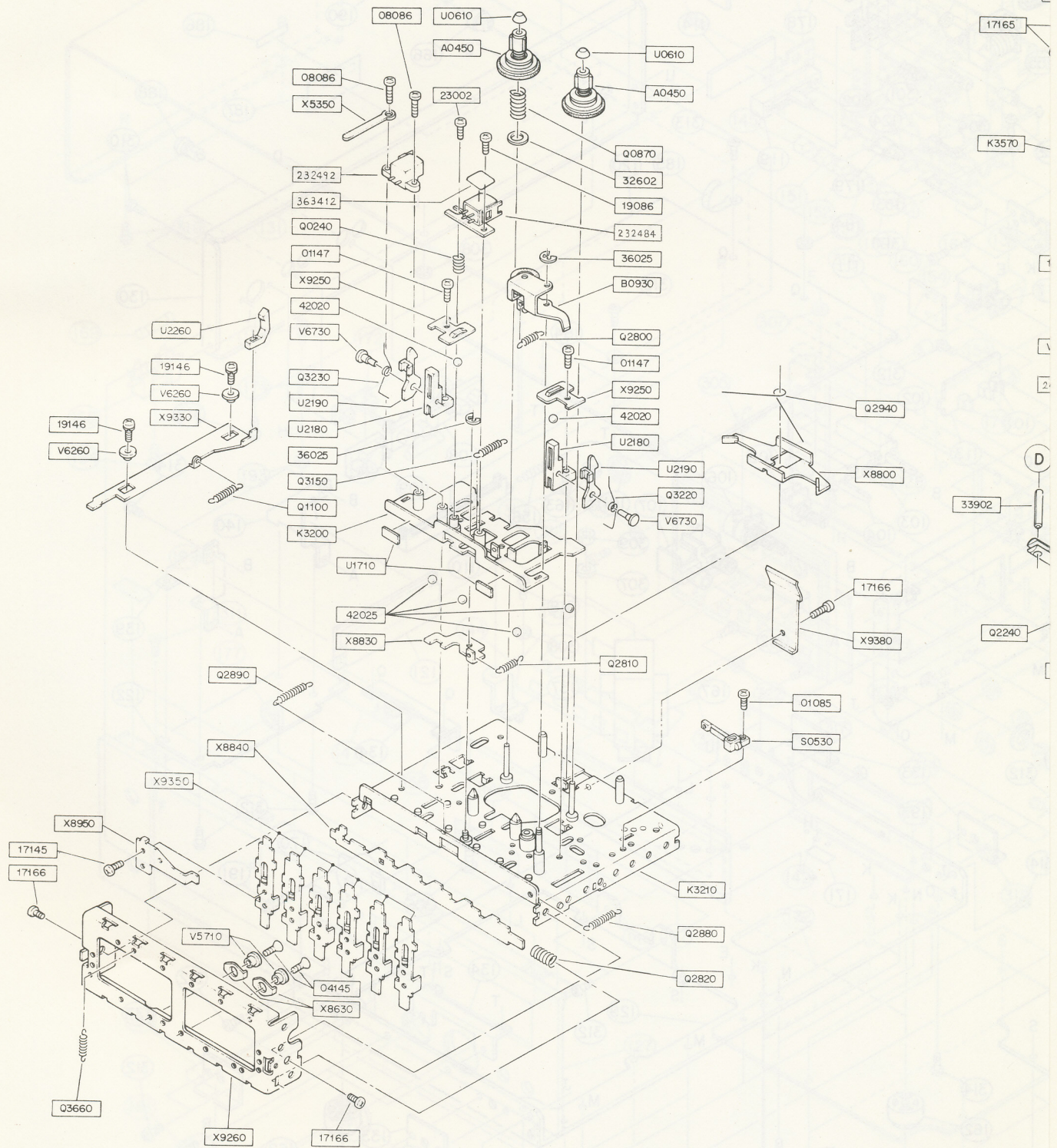
# Replacement Parts List

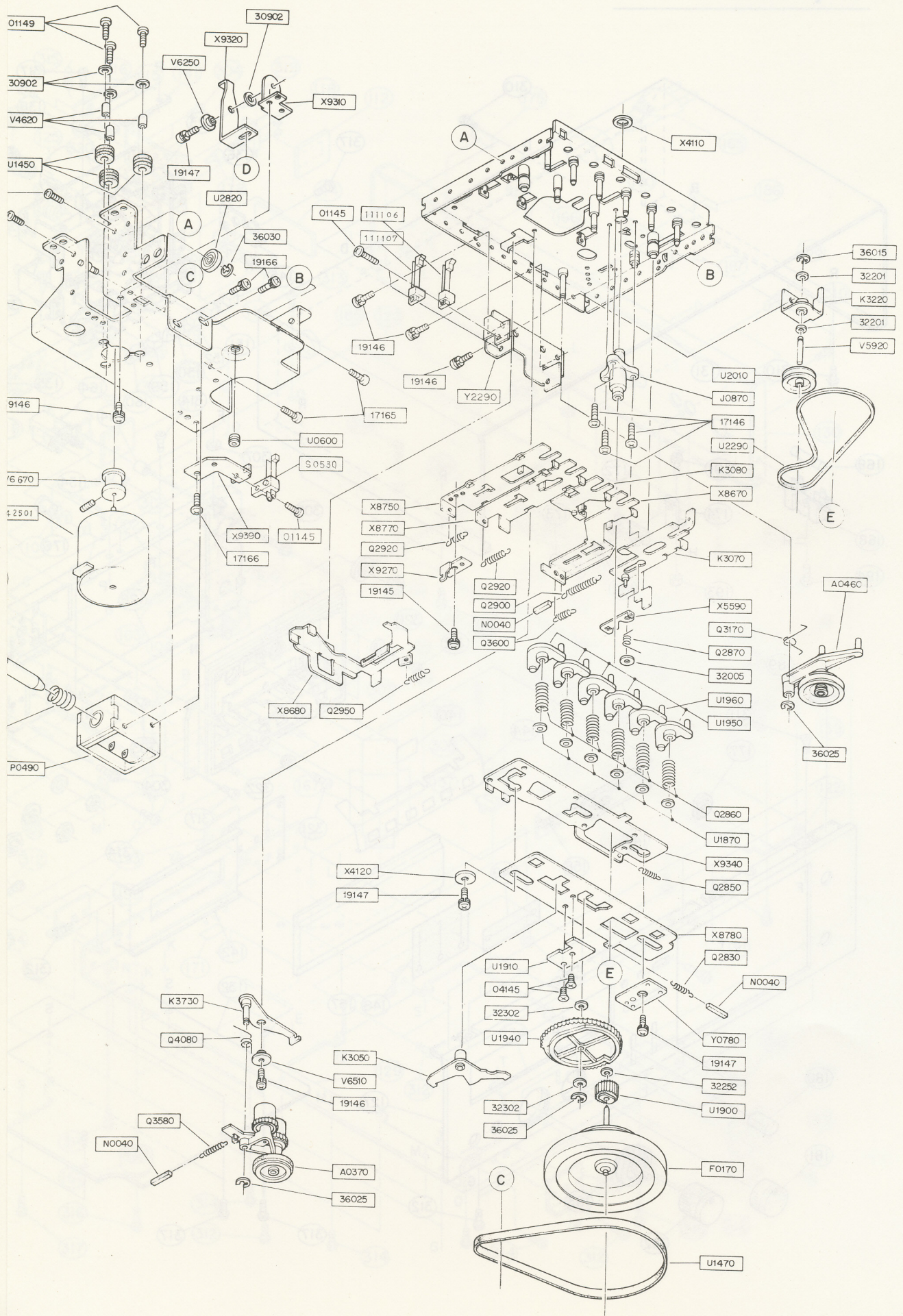
## Exploded View

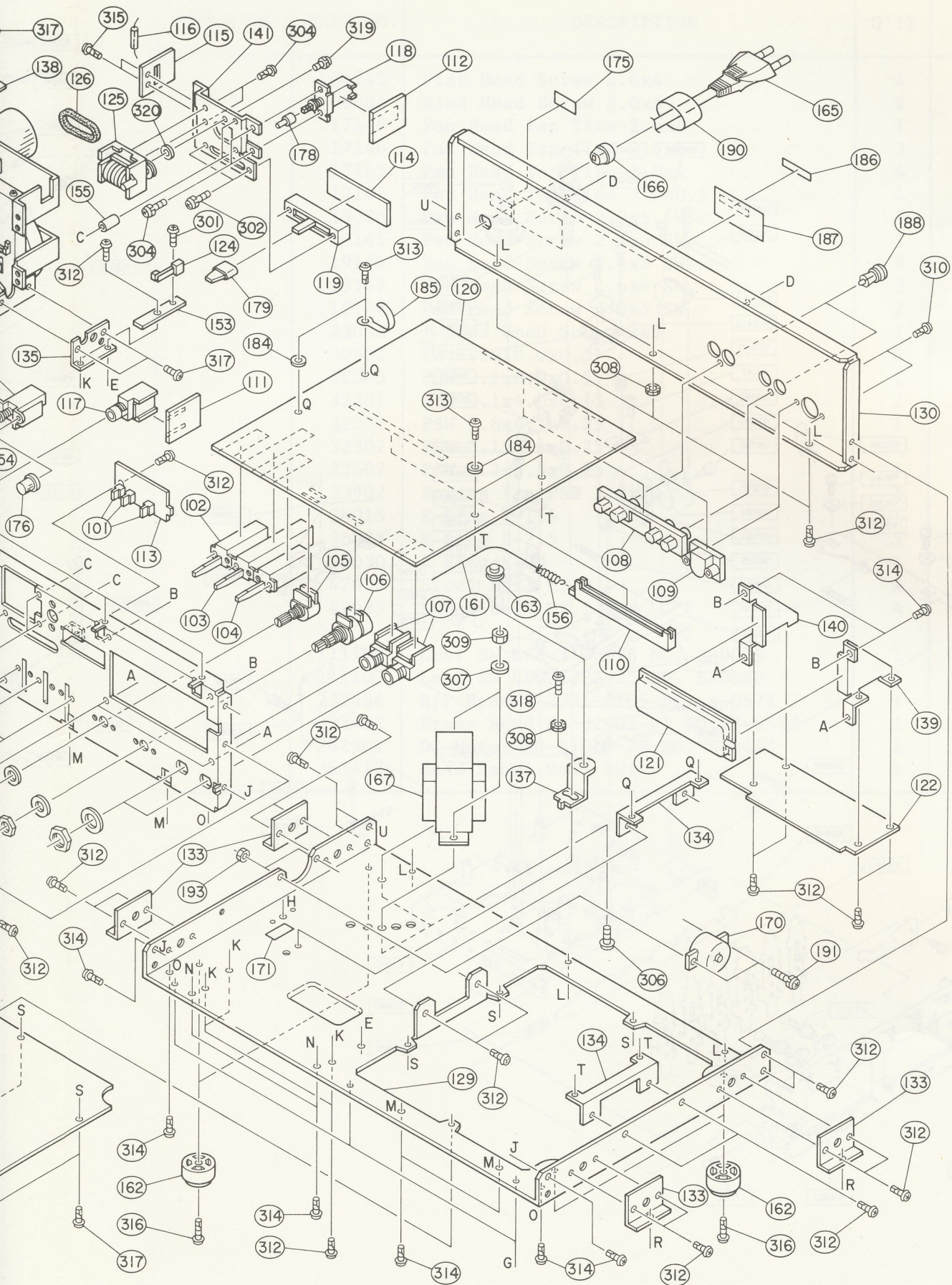
SYMBOL NO.	PART NO.	DESCRIPTION	Q'TY
	04145	Flat Head Screw 2.6x4	4
	08086	Bind Head Screw 2.0x5	2
	17145	Pan Head Tap Tite 2.6x4	1
	17146	Pan Head Tap Tite 2.6x5	3
	17165	Pan Head Tap Tite 3.0x4	4
	17166	Pan Head Tap Tite 3.0x0.5	4
	19086	Pan Head Screw 2.0x5 SW	1
	19145	Pan Head Screw 2.6x4 SW	1
	19146	Pan Head Screw 2.6x5 SW	7
	19147	Pan Head Screw 2.6x6 SW	3
	19166	Pan Head Screw 3.0x5 SW	2
	23002	+ Bind Head Screw 2x5	1
	30902	FW 2.8x10.0x0.5	4
	32005	PSW 2.1x8.0x0.5	1
	32201	PSW 2.1x4.0x0.13	2
	32252	PSW 2.6x4.7x0.25	1
	32302	PSW 3.1x5.4x0.25	2
	32602	PSW 6.2x9.5x0.25	1
	33902	Spring Pin PSB 3.0x20	1
	36015	E Ring E-1.5	1
	36025	E Ring E-2.5	5
	36030	E Ring E-30	1
	42020	Steel Ball M2.0	2
	42025	Steel Ball M2.5	4
	111106	Leaf SW LSA-1123-26 NO. S-0679	1
	111107	Leaf SW LSC-1223-25 NO. S-0680	1
	232484	R/P Head H-2331-0105 NO. S-0671	1
	232492	Erase Head H-532-01-01 NO. S-0557	1
	242501	DC Motor EG-510ED-2B NO. S-0413	1
	363412	Head Label Seal 3014	1



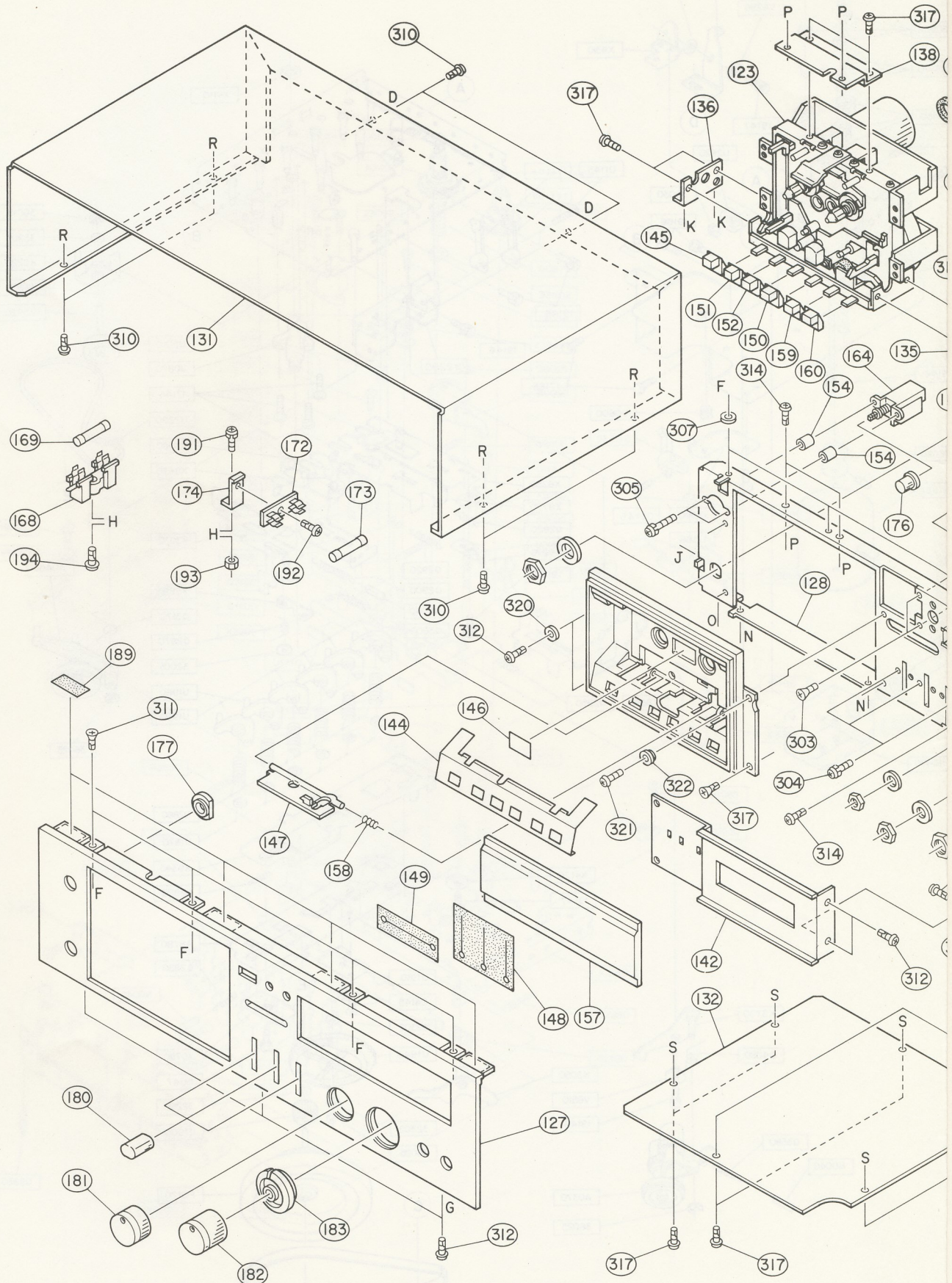
# Exploded View







# Exploded View



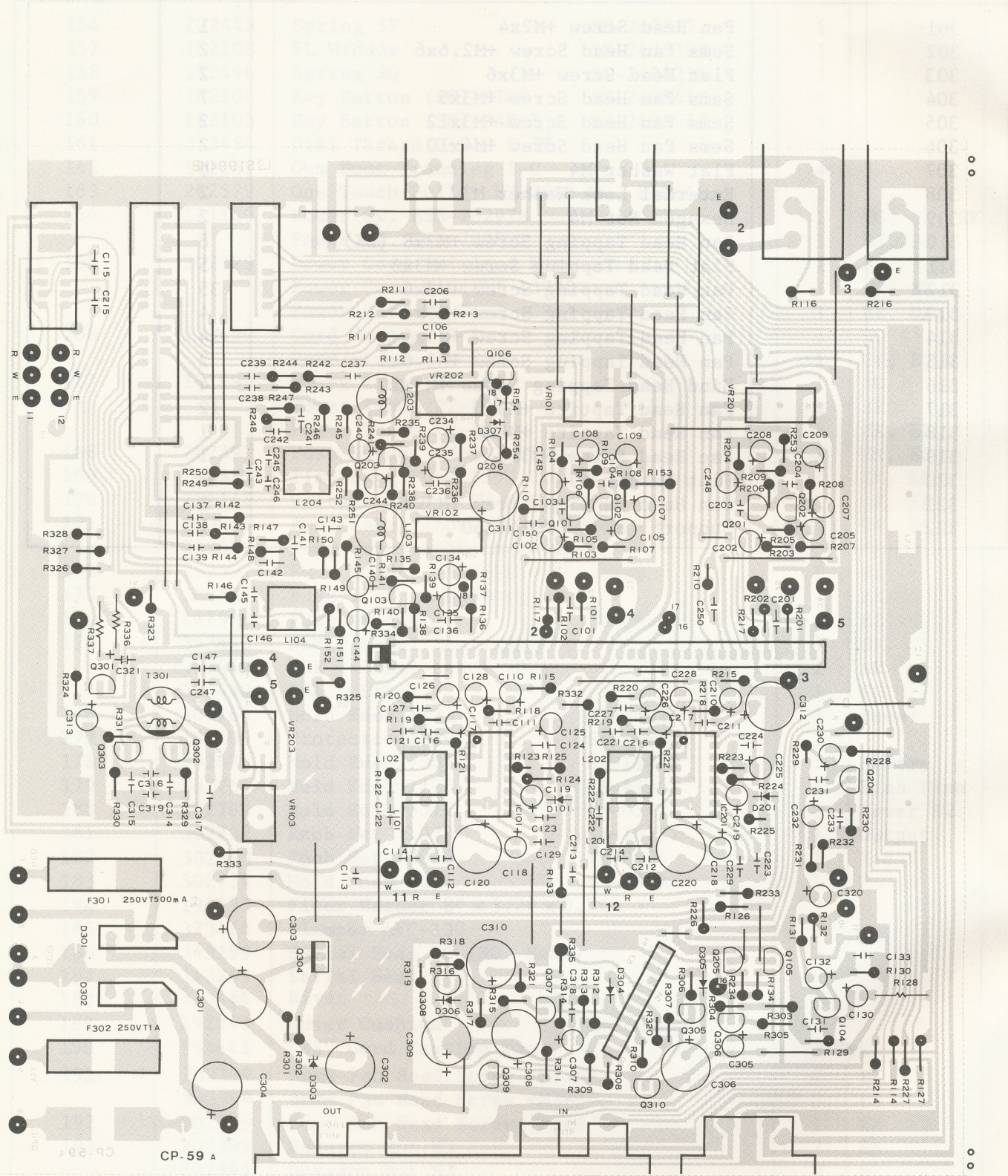
SYMBOL NO.	PART NO.	DESCRIPTION	Q'TY	NOTE
101	010005	LED LN-224RP (Red)	3	
102	111103	Lever SW. SLL183SBS NO. S-0417	1	Dolby
103	111108	Lever SW. SLL143SBS NO. S-0676	1	TapeSelect
104	111105	Lever SW. SLL143SB1S NO. S-0668	1	Input
105	101005	Volume 113G-8022-5 NO. S-0417	1	P/B
106	101004	Volume R113D-2776 NO. S-0416	1	Rec
107	121168	Mic Jack HLJ-0317-01 NO. S-0664	2	
108	121169	4P Pin Jack UA-1069 NO. S-0647	1	
109	121163	5P Pin Jack UC-0029 NO. S-0582	1	
110	111109	Slide SW. ESD-812005 NO. S-0684	1	
111	090952	Phone Jack Board CP-60	1	
112	090953	Switch Board CP-61	1	
113	090954	LED Board CP-62	1	
114	090956	VR Board CP-64	1	
115	090955	Lead Switch Board CP-63	1	
116	111085	Lead SW. ORD-226-2030	1	
117	121167	Head Phone Jack HLJ-0317-01-02	1	
118	111097	Push SW. ESB-712042	1	
119	101019	Slide VR V-159-1925	1	
120		Print Board Ass'y CP-59	1	
121	010017	FL F1P24AW16YS Meter	1	
122		Print Board Ass'y CP-65	1	
123	172018	Mechanism C-3F44A NO. S-0661	1	
124	111116	Leaf SW. LSA-1127C-1	1	
125	252532	Tape Counter T3N-R3-10K-5M1	1	
126	373482	Counter Belt SN-240816	1	
127	312804	Aluminum Panel (SO) SN-220198B	1	
128	141480	Sub Panel SN-220201C	1	
129	141481	Chassis SN-220196C	1	
130	141597	Rear Panel SN-220195B-2	1	SG
		Rear Panel SN-220195B-1	1	SK, E, U
131	141484	Top Cover SN-220200	1	
132	141467	Bottom Plate SN-230244C	1	
133	141485	Top Cover Bracket SN-240804	4	
134	141468	PCB Bracket (N) SN-240789A	2	
135	141486	Mecha. Bracket BK-R (SK) SN-240807A	1	
136	141487	Mecha. Bracket BK-L (SL) SN-240806A	1	
137	141488	Pulley BK SN-240810	1	
138	141489	Mecha. BK (SM) SN-240805B	1	
139	141490	FL PCB Bracket BK-R SN-240808B	1	
140	141491	FL PCB Bracket BK-L SN-240809B	1	
141	141492	Counter Bracket (SG) SN-240803A	1	
142	373480	Ornament Plate SN-240811B	1	
143	182106	Cassette Box SN-210015B	1	
144	373481	Button Plate SN-220209B	1	
145	182113	Key Button (SH)-REC SN-240845C	1	
146	363411	Reflex Seal (SC) SN-240820A	1	
147	182107	Head Cover SN-230253B	1	
148	192239	SW. Himeron (SF) SN-240814A	1	
149	192240	VR. Himeron SN-240815A	1	
150	182115	Key Button (SF)-FF SN-240843C	1	
151	182116	Key Button (SF)-REW SN-240843C	1	
152	182117	Key Button (SF)-PLAY SN-240843C	1	
153	141496	Leaf SW. Bracket (SC) SN-240847	1	
154	151681	Bs Column #7 SN-230242B	2	
155	151650	Stud SZ SN-240818A	2	

SYMBOL NO.	PART NO.	DESCRIPTION	Q'TY	NOTE
156	222445	Spring SP SN-240817	1	
157	182108	FL Window SN-240819B	1	
158	222446	Spring SQ SN-240821A	1	
159	182104	Key Button (SG)-STOP SN-240844C	1	
160	182105	Key Button (SG)-PAUSE SN-240844C	1	
161	373484	Dial Thread L-510 0.7 $\phi$	1	
162	192241	Gum Foot Trannleg T-C	4	
163	262579	One Touch Pulley UX-0005 NO. S-0646	2	
164	111149	Power SW. ESB-70297S	1	SG, SK, EK
		Power SW. ESB-70282T	1	EZ, UZ
165	202329	Power Cord Tri-lead Wire	1	SG
		Power Cord Hitachi 43725	1	SK, EK
		Power Cord UL Cord (CSA)	1	EZ, UZ
166	373499	Cord Stopper R-5	1	SG
		Cord Stopper W-5116	1	SK, E, U
167	161999	Power Trans PT-19C	1	SG
		Power Trans PT-19B	1	SK
		Power Trans PT-19H	1	EK, EZ
168	262597	Fuse Holder (Mold) UF-0015	1	EK, SG
169	262599	Time Lagg Fuse 250V T500mA Primary	1	EK, SG
170	111148	Voltage Select SW ESE-3738	1	EK, EZ
171	363449	Fuse Label 250V T500mA Primary	1	EK, SG
	363449	Fuse Label 125V 1A Primary	1	EZ
172	262597	Fuse Holder (Bakelite) Primary	1	EZ
173	262598	Fuse 125V 1A Primary	1	EZ
174	141599	Fuse Bracket SN-24096A	1	EZ
175	363446	SEMKO Label Seal-1377	1	SK
	363442	VDE Label Label-3026	1	SK
	363440	CSA Label	1	UC
176	302764	Mold Knob 1133 SE-11674	1	Power
177	182109	Protector 1089 SE-11673	1	
178	302675	Mold Knob 7004 SE-11459	1	Memory
179	302766	Mold Knob 1123 SE-11362	1	Bias Fine
180	302767	Mold Knob 3012 YM-0577	3	Lever SW.
181	302732	Knob Set 1080 SE-10777	1	Output
182	302733	Knob Set 3012 YM-0574	1	Rec L
183	302734	Mold Knob 3011 YM-0576	1	Rec R
184	192233	Fiber Washer 8 $\phi$ x 3.2 $\phi$ x 0.5t	3	
185	373464	Clamper AFC-130	1	
186	343299	Serial Seal BG (NO. Seal)	1	
187	343299	Serial Seal	1	
188	373486	Rivet	2	
189	192248	Cover Cushion SN-240866	4	
190	363441	"BS" Cord Caution Tag	1	SG
191	202399	Sems Pan Head Screw +M3x8	2	EK
	202399	Sems Pan Head Screw +M3x8	3	EZ
192	202399	Sems Pan Head Screw +M3x6	1	EZ
193	202399	Hexagon Nut M3	2	EK
	202399	Hexagon Nut M3	3	EZ
194	202399	Pan Head Tapping Screw +M4x6	1	SG, EK

SYMBOL NO.	PART NO.	DESCRIPTION	Q'TY	NOTE
301		Pan Head Screw +M2x4	1	
302		Sems Pan Head Screw +M2.6x6	2	
303		Flat Head Screw +M3x6	2	
304		Sems Pan Head Screw +M3x5	7	
305		Sems Pan Head Screw +M3x12	2	
306		Sems Pan Head Screw +M4x10	2	
307		Flat Washer M4	6	
308		External Lock Washer M3	2	
309		Hexagon Nut M4	2	
310		Pan Head Tapping Screw +M3x8 (BK)	8	
311		Flat Head Tapping Screw +M3x6	5	
312		Pan Head Tapping Screw +M3x6	35	
313		Pan Head Tapping Screw +M3x8	4	
314		Pan Head Tapping Screw +M3x5	14	
315		Pan Head Tapping Screw +M2.6x6	2	
316		Bind Head Tapping Screw +M3x10	4	
317		Pan Head Taptite +M3x5	12	
318		Pan Head Taptite +M3x6	1	
319		Pan Head Screw +M3x6	1	
320		Flat Washer M3	3	
321		Pan Head Tapping Screw +M3x8	1	
322	151604	Support (SE) SN-240860	1	

# <MASTER BOARD>

(CP-59)





# Master Boad

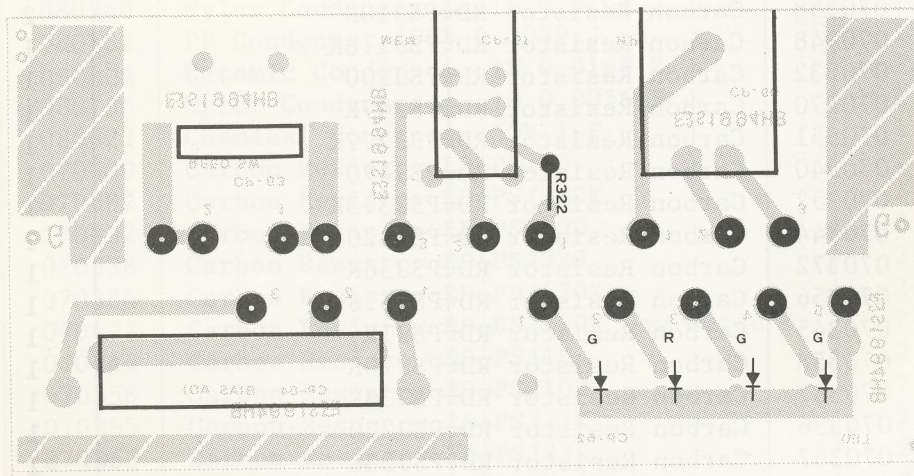
SYMBOL NO.	PART NO.	DESCRIPTION	Q'TY	NOTE
	090951	PCB CP-59	1	
IC101,201	030136	IC LM1011N	2	
Q101,201	020068	Transistor 2SC1327T	2	
Q102,202	020068	Transistor 2SC1327T	2	
Q103,203	020074	Transistor 2SC1685Q	2	
Q104,204	020075	Transistor 2SC1815Y	2	
Q105,205	020075	Transistor 2SC1815Y	2	
Q301	020069	Transistor 2SC1384R	1	
Q302,303	020075	Transistor 2SC1815Y	2	
Q303	020075	Transistor 2SC1815Y	1	
Q304	020076	Transistor 2SC1846R	1	
Q305,306	020088	Transistor 2SA1015Y	2	
Q307,308	020088	Transistor 2SA1015Y	2	
Q309	020075	Transistor 2SC1815Y	1	
Q310	020093	Transistor 2SC2655Y	1	
D101,201	040197	Diode 1S1555	2	
D301,302	040190	Silicon Stack 1SVB10	2	
D303	040184	Zenner Diode VZ23B	1	
D304	040198	Diode RA1Z	1	
D305,306	040197	Diode 1S1555	2	
C201,101	080802	Ceramic Condenser 1H 560pF B.K	2	
C102,202	080842	MS Condenser 50V 3.3 $\mu$ F M	2	
C103,203	080799	Ceramic Condenser 1H 330pF K.SL	2	
C104,204	080793	Ceramic Condenser 1H 47pF K.SL	2	
C105,205	080639	Chemical Condenser 10V 47 $\mu$ F	2	
C106,206	080736	Mylar Condenser 1H 0.0056 $\mu$ F J	2	
C107,207	080624	Chemical Condenser 50V 3.3 $\mu$ F	2	
C108,208	080635	Chemical Condenser 16V 33 $\mu$ F	2	
C109,209	080640	Chemical Condenser 16V 47 $\mu$ F	2	
C110,210	080839	MS Condenser 50V 0.33 $\mu$ F M	2	
C111,211	080797	Ceramic Condenser 1H 150pF K.SL	2	
C112,212	080795	Ceramic Condenser 1H 68pF K.SL	2	
C113,213	080760	Mylar Condenser 1H 0.003 $\mu$ F J	2	
C114,214	080725	Mylar Condenser 1H 0.0022 $\mu$ F J	2	
C115,215	080731	Mylar Condenser 1H 0.0039 $\mu$ F J	2	
C116,216	080711	Mylar Condenser 1H 0.0047 $\mu$ F H	2	
C117,217	080627	Chemical Condenser 16V 10 $\mu$ F	2	
C118,218	080627	Chemical Condenser 16V 10 $\mu$ F	2	
C119,219	080627	Chemical Condenser 16V 10 $\mu$ F	2	
C120,220	080649	Chemical Condenser 10V 220 $\mu$ F	2	
C121,221	080747	Mylar Condenser 1H 0.027 $\mu$ F J	2	
C122,222	080735	Mylar Condenser 1H 0.0056 $\mu$ F H	2	
C123,223	080751	Mylar Condenser 1H 0.047 $\mu$ F J	2	
C124,224	080771	Mylar Condenser 1H 0.1 $\mu$ F J	2	
C125,225	080839	MS Condenser 50V 0.33 $\mu$ F M	2	
C126,226	080630	Chemical Condenser 16V 22 $\mu$ F	2	
C127,227	080803	Ceramic Condenser 1H 0.001 $\mu$ F B.K	2	
C128,228	080630	Chemical Condenser 16V 22 $\mu$ F	2	
C129,229	080803	Ceramic Condenser 1H 0.001 $\mu$ F B.K	2	
C130,230	080627	Chemical Condenser 16V 10 $\mu$ F	2	
C131,231	080798	Ceramic Condenser 1H 220pF K.SL	2	
C132,232	080635	Chemical Condenser 16V 33 $\mu$ F	2	
C133,233	080810	Ceramic Condenser 1H 0.0047 $\mu$ F Z	2	
C134,234	080840	MS Condenser 50V 0.22 $\mu$ F M	2	
C135,235	080621	Chemical Condenser 50V 0.47 $\mu$ F	2	
C136,236	080802	Ceramic Condenser 1H 560pF B.K	2	

SYMBOL NO.	PART NO.	DESCRIPTION	Q'TY	NOTE
C137,237	080768	Mylar Condenser 1H 0.012μF J	2	
C138,238	080723	Mylar Condenser 1H 0.0015μF J	2	
C139,239	080724	Mylar Condenser 1H 0.0018μF J	2	
C140,240	080639	Chemical Condenser 10V 47μF	2	
C141,241	080751	Mylar Condenser 1H 0.047μF J	2	
C142,242	080768	Mylar Condenser 1H 0.012μF J	2	
C143,243	080751	Mylar Condenser 1H 0.047μF J	2	
C144,244	080623	Chemical Condenser 50V 2.2μF	2	
C145,245	080817	Ceramic Condenser 1H 470pF B.K	2	
C146,246	080796	Ceramic Condenser 1H 100pF K.SL	2	
C147,247	080798	Ceramic Condenser 1H 220pF K.SL	2	
C148,248	080627	Chemical Condenser 16V 10μF	2	
C149,249		Non Use		
C150,250	080798	Ceramic Condenser 1H 220pF K.SL	2	
C151,251		Non Use		
C301	080657	Chemical Condenser 35V 330μF	1	
C302,303	080646	Chemical Condenser 25V 100μF	2	
C304	080687	Chemical Condenser 16V 2200μF	1	
C305	080624	Chemical Condenser 50V 3.3μF	1	
C306	080646	Chemical Condenser 25V 100μF	1	
C307	080627	Chemical Condenser 16V 10μF	1	
C308	080649	Chemical Condenser 10V 220μF	1	
C309	080649	Chemical Condenser 10V 220μF	1	
C310,311	080646	Chemical Condenser 25V 100μF	2	
C312	080650	Chemical Condenser 16V 220μF	1	
C313	080628	Chemical Condenser 25V 10μF	1	
C314,315	080736	Mylar Condenser 1H 0.0056μF J	2	
C316	080740	Mylar Condenser 1H 0.01μF J	1	
C317	080782	PP Condenser 400V 0.0039 J	1	
C318	080808	Ceramic Condenser 1H 0.01μF Z	1	
C319	080736	Mylar Condenser 1H 0.0056μF J	1	
C320	080622	Chemical Condenser 50V 1μF	1	
R101,201	070320	Carbon Resistor RD <sub>T</sub> PSJ10	2	
R102,202	070382	Carbon Resistor RD <sub>T</sub> PSJ330K	2	
R103,203	070332	Carbon Resistor RD <sub>T</sub> PSJ100	2	
R104,204	070338	Carbon Resistor RD <sub>T</sub> PSJ330	2	
R105,205	070384	Carbon Resistor RD <sub>T</sub> PSJ470K	2	
R106,206	070477	Carbon Resistor RD <sub>T</sub> PSJ120K Low Noise	2	
R107,207	070345	Carbon Resistor RD <sub>T</sub> PSJ1K	2	
R108,208	070358	Carbon Resistor RD <sub>T</sub> PSJ10K	2	
R109,209	070365	Carbon Resistor RD <sub>T</sub> PSJ27K	2	
R110,210	070363	Carbon Resistor RD <sub>T</sub> PSJ22K	2	
R111,211	070357	Carbon Resistor RD <sub>T</sub> PSJ8.2K	2	
R112,212	070359	Carbon Resistor RD <sub>T</sub> PSJ12K	2	
R113,213	070385	Carbon Resistor RD <sub>T</sub> PSJ560K	2	
R114,214	070367	Carbon Resistor RD <sub>T</sub> PSJ33K	2	
R116,216	070352	Carbon Resistor RD <sub>T</sub> PSJ3.3K	2	
R117,217	070358	Carbon Resistor RD <sub>T</sub> PSJ10K	2	
R118,218	070340	Carbon Resistor RD <sub>T</sub> PSJ470	2	
R119,219	070370	Carbon Resistor RD <sub>T</sub> PSJ47K	2	
R120,220	070376	Carbon Resistor RD <sub>T</sub> PSJ100K	2	
R121,221	070352	Carbon Resistor RD <sub>T</sub> PSJ3.3K	2	
R122,222	070335	Carbon Resistor RD <sub>T</sub> PSJ180	2	
R123,223	070479	Carbon Resistor RD <sub>T</sub> PSJ270K Low Noise	2	
R124,224	070479	Carbon Resistor RD <sub>T</sub> PSJ270K Low Noise	2	
R125,225	070385	Carbon Resistor RD <sub>T</sub> PSJ56CK	2	

SYMBOL NO.	PART NO.	DESCRIPTION	Q'TY	NOTE
R126,226	070345	Carbon Resistor RD $\frac{1}{4}$ PSJ1K	2	
R127,227	070336	Carbon Resistor RD $\frac{1}{4}$ PSJ220	2	
R128,228	070350	Carbon Resistor RD $\frac{1}{4}$ PSJ2.2K	2	
R129,229	070477	Carbon Resistor RD $\frac{1}{4}$ PSJ120K Low Noise	2	
R130,230	070324	Carbon Resistor RD $\frac{1}{4}$ PSJ22	2	
R131,231	070555	Metal Oxide Resistor MOR 1PJ 680	2	
R132,232	070380	Carbon Resistor RD $\frac{1}{4}$ PSJ470	2	
R133,233	070380	Carbon Resistor RD $\frac{1}{4}$ PSJ220K	2	
R134,234	070351	Carbon Resistor RD $\frac{1}{4}$ PSJ2.7K	2	
R135,235	070365	Carbon Resistor RD $\frac{1}{4}$ PSJ27K	2	
R136,236	070369	Carbon Resistor RD $\frac{1}{4}$ PSJ39K	2	
R137,237	070358	Carbon Resistor RD $\frac{1}{4}$ PSJ10K	2	
R138,238	070385	Carbon Resistor RD $\frac{1}{4}$ PSJ560K	2	
R139,239	070374	Carbon Resistor RD $\frac{1}{4}$ PSJ82K	2	
R140,240	070356	Carbon Resistor RD $\frac{1}{4}$ PSJ6.8K	2	
R141,241	070346	Carbon Resistor RD $\frac{1}{4}$ PSJ1.2K	2	
R142,242	070334	Carbon Resistor RD $\frac{1}{4}$ PSJ150	2	
R143,243	070326	Carbon Resistor RD $\frac{1}{4}$ PSJ33	2	
R144,244	070332	Carbon Resistor RD $\frac{1}{4}$ PSJ100	2	
R145,245	070353	Carbon Resistor RD $\frac{1}{4}$ PSJ3.9K	2	
R146,246	070355	Carbon Resistor RD $\frac{1}{4}$ PSJ5.6K	2	
R147,247	070351	Carbon Resistor RD $\frac{1}{4}$ PSJ2.7K	2	
R148,248	070351	Carbon Resistor RD $\frac{1}{4}$ PSJ2.7K	2	
R149,249	070350	Carbon Resistor RD $\frac{1}{4}$ PSJ2.2K	2	
R150,250	070345	Carbon Resistor RD $\frac{1}{4}$ PSJ1K	2	
R151,251	070345	Carbon Resistor RD $\frac{1}{4}$ PSJ1K	2	
R152,252	070356	Carbon Resistor RD $\frac{1}{4}$ PSJ6.8K	2	
R153,253	070358	Carbon Resistor RD $\frac{1}{4}$ PSJ10K	2	
R301	070348	Carbon Resistor RD $\frac{1}{4}$ PSJ1.8K	1	
R302	070332	Carbon Resistor RD $\frac{1}{4}$ PSJ100	1	
R303	070370	Carbon Resistor RD $\frac{1}{4}$ PSJ47K	1	
R304	070351	Carbon Resistor RD $\frac{1}{4}$ PSJ2.7K	1	
R305	070340	Carbon Resistor RD $\frac{1}{4}$ PSJ470	1	
R306	070352	Carbon Resistor RD $\frac{1}{4}$ PSJ3.3K	1	
R307	070344	Carbon Resistor RD $\frac{1}{4}$ PSJ820	1	
R308	070372	Carbon Resistor RD $\frac{1}{4}$ PSJ56K	1	
R309	070356	Carbon Resistor RD $\frac{1}{4}$ PSJ6.8K	1	
R310	070345	Carbon Resistor RD $\frac{1}{4}$ PSJ1K	1	
R311	070358	Carbon Resistor RD $\frac{1}{4}$ PSJ10K	1	
R312	070367	Carbon Resistor RD $\frac{1}{4}$ PSJ33K	1	
R313	070336	Carbon Resistor RD $\frac{1}{4}$ PSJ220	1	
R314	070367	Carbon Resistor RD $\frac{1}{4}$ PSJ33K	1	
R315	070326	Carbon Resistor RD $\frac{1}{4}$ PSJ33	1	
R316	070358	Carbon Resistor RD $\frac{1}{4}$ PSJ10K	1	
R317	070372	Carbon Resistor RD $\frac{1}{4}$ PSJ56K	1	
R318	070363	Carbon Resistor RD $\frac{1}{4}$ PSJ22K	1	
R319	070337	Carbon Resistor RD $\frac{1}{4}$ PSJ270	1	
R320	070341	Carbon Resistor RD $\frac{1}{4}$ PSJ560	1	
R321	070358	Carbon Resistor RD $\frac{1}{4}$ PSJ10K	1	
R322	070345	Carbon Resistor RD $\frac{1}{4}$ PSJ1K	1	
R323	070337	Carbon Resistor RD $\frac{1}{4}$ PSJ270	1	
R324,325	070351	Carbon Resistor RD $\frac{1}{4}$ PSJ2.7K	2	
R326	070519	Carbon Resistor RD $\frac{1}{2}$ PSJ12	1	
R327	070550	Metal Oxide Resistor MOR 1PJ 180	1	
R328	070559	Metal Oxide Resistor MOR 1PJ 270	1	
R329,330	070369	Carbon Resistor RD $\frac{1}{4}$ PSJ39K	2	

SYMBOL NO.	PART NO.	DESCRIPTION	Q'TY	NOTE
R331	070519	Carbon Resistor RD $\frac{1}{2}$ PSJ12	1	
R332	070520	Carbon Resistor RD $\frac{1}{2}$ PSJ390	1	
R333	070349	Carbon Resistor RD $\frac{1}{4}$ PSJ2K	1	
R334	070337	Carbon Resistor RD $\frac{1}{4}$ PSJ270	1	
R335	070332	Carbon Resistor RD $\frac{1}{4}$ PSJ100	1	
	202349	Jumper Wire 5m/m IPS-1041-2	9	
	202350	Jumper Wire 7.5m/m IPS-1041-3	1	
	202352	Jumper Wire 12.5m/m IPS-1041-5	12	
	202354	Jumper Wire 17.5m/m IPS-1041-7	9	
	202357	Jumper Wire 25.0m/m IPS-1041-10	12	
VR101,201	060272	Semi Fixed Resistor RV10FC-01-2 50KB	2	
VR102,202	060270	Semi Fixed Resistor RV10FC-01-2 10KB	2	
VR103,203	060282	Semi Fixed Resistor RV10FB-01-7 50KB	2	
L101,201	050231	Filter Coil PC-03 (Orange) 36mH	2	
L102,202	050232	Filter Coil PC-04 (Yellow) 23mH	2	
L103,203	050237	Peaking Coil FS-1012 6.8mH	2	
L104,204	050230	Trap Coil PC-02 (White) 20mH	2	
T301	050238	OSC Coil OSC-03	1	
	212411	Heat Sink (SL) SN-240823	1	
	262596	Fuse Clip UF-0016	4	SK, SG
	262599	Time Lagg Fuse 250V T500mA Secondary	1	SK, SG
	262599	Time Lagg Fuse 250V T1A Secondary	1	SK, SG

## LED Boad (CP-62)

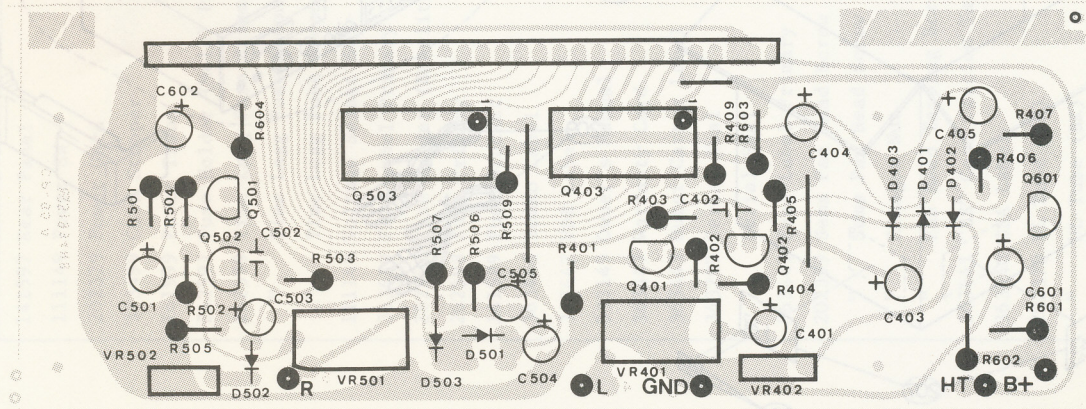


SYMBOL NO.	PART NO.	DESCRIPTION	Q'TY	NOTE
	090952	Phone Jack Board CP-60	1	
	090953	Switch Board CP-61	1	
	090954	LED Board CP-62	1	
	090956	VR Board CP-64	1	
	090955	Lead Switch Board CP-63	1	
	111085	Lead SW. ORD-226-2030	1	
	121167	Head Phone Jack HLJ-0317-01-02	1	
	111097	Push SW. ESB-712042	1	
	101019	Slide VR V-159-1925	1	

# CP-65

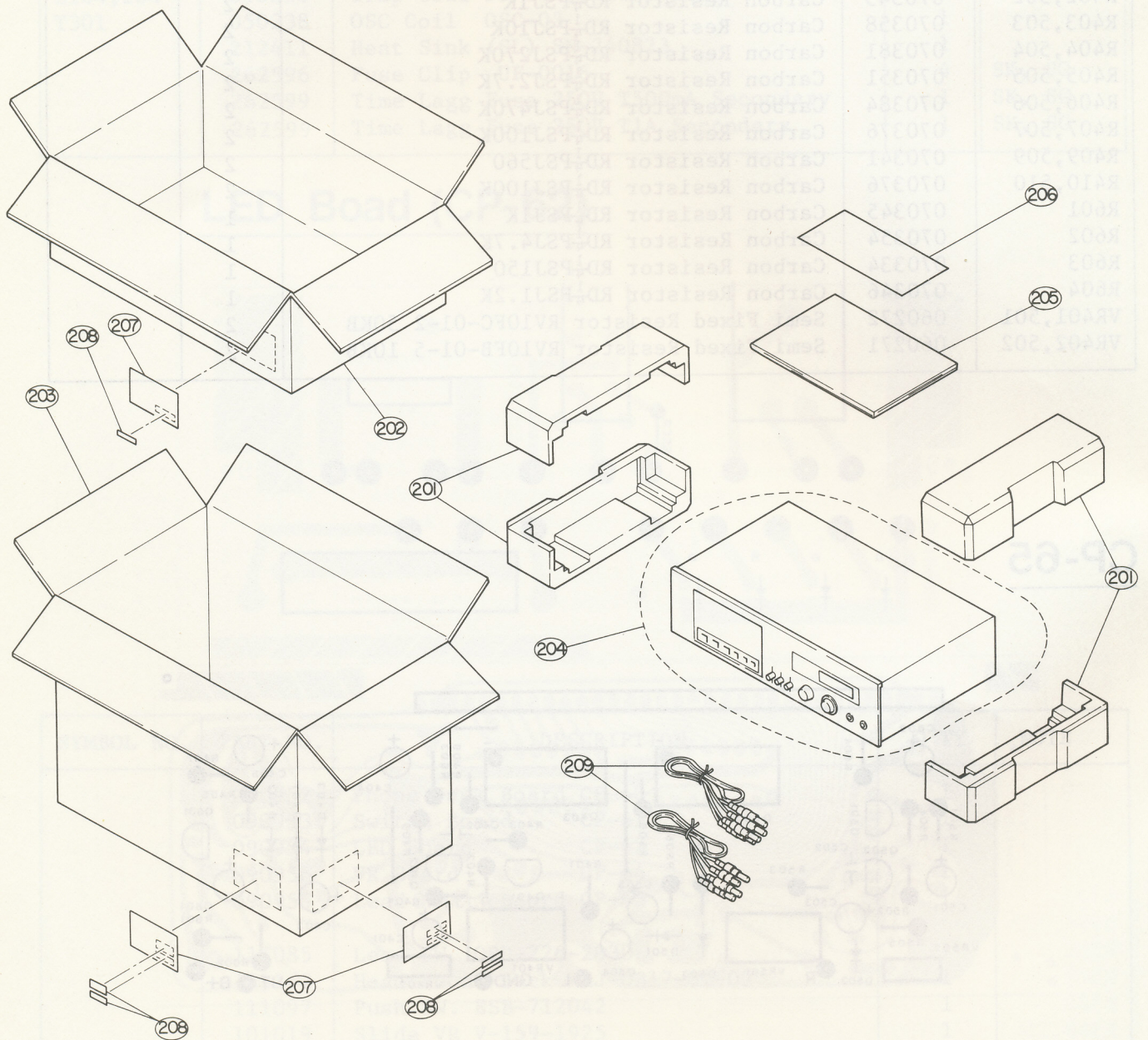
SYMBOL NO.	PART NO.	DESCRIPTION	Q'TY	NOTE
	090957	PCB CP-65	1	
Q401,501	020074	Transistor 2SC1685(Q)	2	
Q402,502	020074	Transistor 2SC1685(Q)	2	
Q601	020075	Transistor 2SC1815(Y)	2	
IC401,501	030130	IC BA658	2	
D401,501	040196	Diode 1N60	2	
D402,502	040197	Diode 1S1555	2	
D403,503	040196	Diode 1N60	2	
C401,501	080627	Chemical Condenser 16V10 $\mu$ F	2	
C402,502	080796	Ceramic Condenser 100pF K.SL	2	
C403,503	080621	Chemical Condenser 50V 0.47 $\mu$ F	2	
C404,504	080625	Chemical Condenser 25V 4.7 $\mu$ F	2	
C405,504	080621	Chemical Condenser 50V 0.47 $\mu$ F	2	
C601	080641	Chemical Condenser 25V 47 $\mu$ F	1	
C602	080646	Chemical Condenser 25V 100 $\mu$ F	1	
R401,501	070373	Carbon Resistor RD $\frac{1}{4}$ PSJ68K	2	
R402,502	070345	Carbon Resistor RD $\frac{1}{4}$ PSJ1K	2	
R403,503	070358	Carbon Resistor RD $\frac{1}{4}$ PSJ10K	2	
R404,504	070381	Carbon Resistor RD $\frac{1}{4}$ PSJ270K	2	
R405,505	070351	Carbon Resistor RD $\frac{1}{4}$ PSJ2.7K	2	
R406,506	070384	Carbon Resistor RD $\frac{1}{4}$ PSJ470K	2	
R407,507	070376	Carbon Resistor RD $\frac{1}{4}$ PSJ100K	2	
R409,509	070341	Carbon Resistor RD $\frac{1}{4}$ PSJ560	2	
R410,510	070376	Carbon Resistor RD $\frac{1}{4}$ PSJ100K	2	
R601	070345	Carbon Resistor RD $\frac{1}{4}$ PSJ1K	1	
R602	070354	Carbon Resistor RD $\frac{1}{4}$ PSJ4.7K	1	
R603	070334	Carbon Resistor RD $\frac{1}{4}$ PSJ150	1	
R604	070346	Carbon Resistor RD $\frac{1}{4}$ PSJ1.2K	1	
VR401,501	060272	Semi Fixed Resistor RV10FC-01-2 50KB	2	
VR402,502	060271	Semi Fixed Resistor RV10FB-01-5 10KB	2	

# CP-65



# Packing Materials

SYMBOL NO.	PART NO.	DESCRIPTION	Q'TY	NOTE
201	353399	Side Packing	1 set	
202	353388	Carton BW	1	
203	353312	Master Carton	1/2	
204	373466	Vinyl Sack 1	1	
205	333149	Owner's Manual	1	
206	363447	Warranty Card	1	UZ, UC
207	363443	Outer Carton Label	2	
208	343299	Serial Seal BG (No. Seal)	3	
209	202301	Pin-Pin Cord	2 sets	



# Specified Parts List

Specifications

	SG	SK	EK	EZ	UZ
141597 Rear Panel	SN-220195B-2	SN-220195B-1	SN-220195B-1	SN-220195B-1	SN-220195B-1
111149 Power SW	ESB-70297S	ESB-70297S	ESB-70297S	ESB-70282T	ESB-70282T
202329 Power Cord	Tri-lead Wire	Hitachi 43725	Hitachi 43725	UL Cord (CSA)	UL Cord (CSA)
373499 Cord Stopper	R-5	W-5116	W-5116	W-5116	W-5116
161999 Power Trans	PT-19C	PT-19B	PT-19H	PT-19H	PT-19F
262597 Fuse Holder (Mold) Primary	UF-0015	Non Use	UF-0015	Non Use	Non Use
262599 Time Lagg Fuse Primary	250V T500mA	Non Use	250V T500mA	Non Use	Non Use
" Time Lagg Fuse Secondary	250V T500mA	250V T500mA	Non Use	Non Use	Non Use
" Time Lagg Fuse Secondary	250V T1A	250V T1A	Non Use	Non Use	Non Use
111148 Voltage Select SW	Non Use	Non Use	ESE-3738	ESE-3738	Non Use
363449 Fuse Label Primary	250V T500mA	Non Use	250V T500mA	Non Use	Non Use
262597 Fuse Holder (Bakelite)	Non Use	Non Use	Non Use	Bakelite 30 (CSA)	Non Use
262598 Fuse Primary	Non Use	Non Use	Non Use	125V 1A	Non Use
141599 Fuse Bracket	Non Use	Non Use	Non Use	SN-24096A	Non Use
363446 Semko Label	Non Use	Seal-1377	Non Use	Non Use	Non Use
363442 VDE Label	Non Use	Label-3026	Non Use	Non Use	Non Use
333149 Owner's Manual	AS	AS	AS	AS	AS
363447 Warranty Card	Non Use	Non Use	Non Use	Non Use	Warranty Card
363443 Outer Carton Label	AC 240V SG 2 pcs	AC 220V SK 2 pcs	AC 220V EK 2 pcs	AC 120V EZ 2 pcs	AC 120V UZ 2 pcs
343299 Serial Seal	BG (NO. Seal) 4 pcs	BG (NO. Seal) 4 pcs	BG (NO. Seal) 4 pcs	BG (NO. Seal) 4 pcs	BG (NO. Seal) 4 pcs
" Serial Seal	BE	BD	BD	BC	BC
363449 Fuse Label Primary	Non Use	Non Use	Non Use	125V 1A	Non Use
202399 Sems Pan Head Screw	Non Use	Non Use	M3 x 8 2 pcs	M3 x 8 3 pcs	Non Use
" Sems Pan Head Screw	Non Use	Non Use	Non Use	M3 x 6	Non Use
" Hexagon Nut	Non Use	Non Use	M3 2 pcs	M3 3 pcs	Non Use
" Pan Head Tapping Screw	M4 x 6	Non Use	M4 x 6	Non Use	Non Use
363441 "BS" Cord Caution Tag	"BS" Cord Caution	Non Use	Non Use	Non Use	Non Use
363440 CSA Label	Non Use	Non Use	Non Use	Non Use	Non Use
202370 UL Tube (BK)	AWG#7 3.7 x 15 2 pcs	Non Use	AWG 7 3.7 x 15 6 pcs	AWG 7 3.7 x 15 6 pcs	Non Use
" UL Tube (BK)	AWG#6/16 9.5 x 100	AWG#6/16 9.5 x 100	Non Use	Non Use	AWG 6/16 9.5 x 100
" UL PVC (WH)	AWG#22 L-170	Non Use	AWG 22 L-170	AWG 22 L-170	Non Use
" UL PVC (WH)	Non Use	Non Use	AWG 22 L-210	AWG 22 L-210	Non Use
262596 Fuse Clip	UF-0016 4 pcs	UF-0016 4 pcs	Non Use	Non Use	Non Use

# Specifications

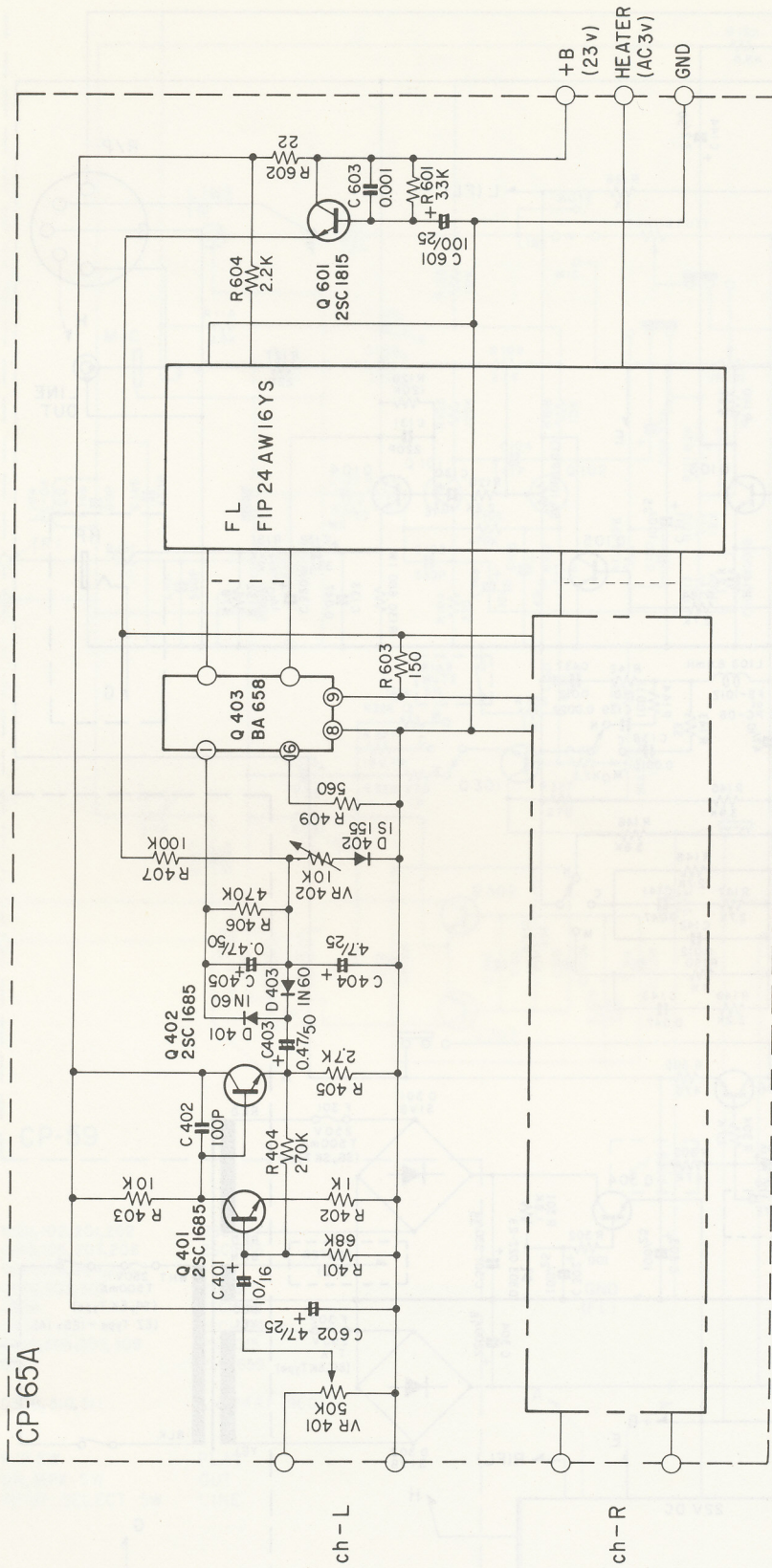
Heads:	2 heads Record/Playback Head (Ultra Hard Permalloy) x 1 Erase Head (Double-Gapped Ferrite) x 1
Wow & Flutter:	no more than 0.05% (W.R.M.S.)
Signal-to-Noise Ratio:	better than 58dB (Dolby off) ... metal tape better than 65dB (Dolby on) .... metal tape better than 56dB (Dolby off) ... CrO <sub>2</sub> tape better than 63dB (Dolby on) .... CrO <sub>2</sub> tape better than 50dB (Dolby off) ... LH tape better than 60dB (Dolby on) .... LH tape
Frequency Response:	30Hz - 20,000Hz (metal tape) 30Hz - 18,000Hz (CrO <sub>2</sub> tape) 30Hz - 16,000Hz (LH tape)
Overall Distortion:	no more than 1.5% (LH tape, 1kHz, 0dB)
Input Sensitivity:	line in; 100mV mic; 0.45mV (recommended microphone impedance: 600 - 10k ohms) DIN; 1mV/1k ohms
Output Level:	line; 460mV headphone; 1mV (8 ohms load)
Additional Features:	REC. MUTE function, Bias Fine Adjuster, Tape Selector (CrO <sub>2</sub> , normal, metal), Fluorescent Peak Level Indicator, Memory Counter, Dolby Noise Reduction System, Headphone Jack.
Power Consumption:	15W
Dimensions:	438(W) x 245(D) x 140(H)mm (17-1/4" x 9-5/8" x 5-1/2") (including legs, rear protrusions & knobs)
Weight:	Net 5.5kgs (12.1 lbs.) Gross 7.0kgs (15.4 lbs.)

Specifications and appearance design subject to change without notice.

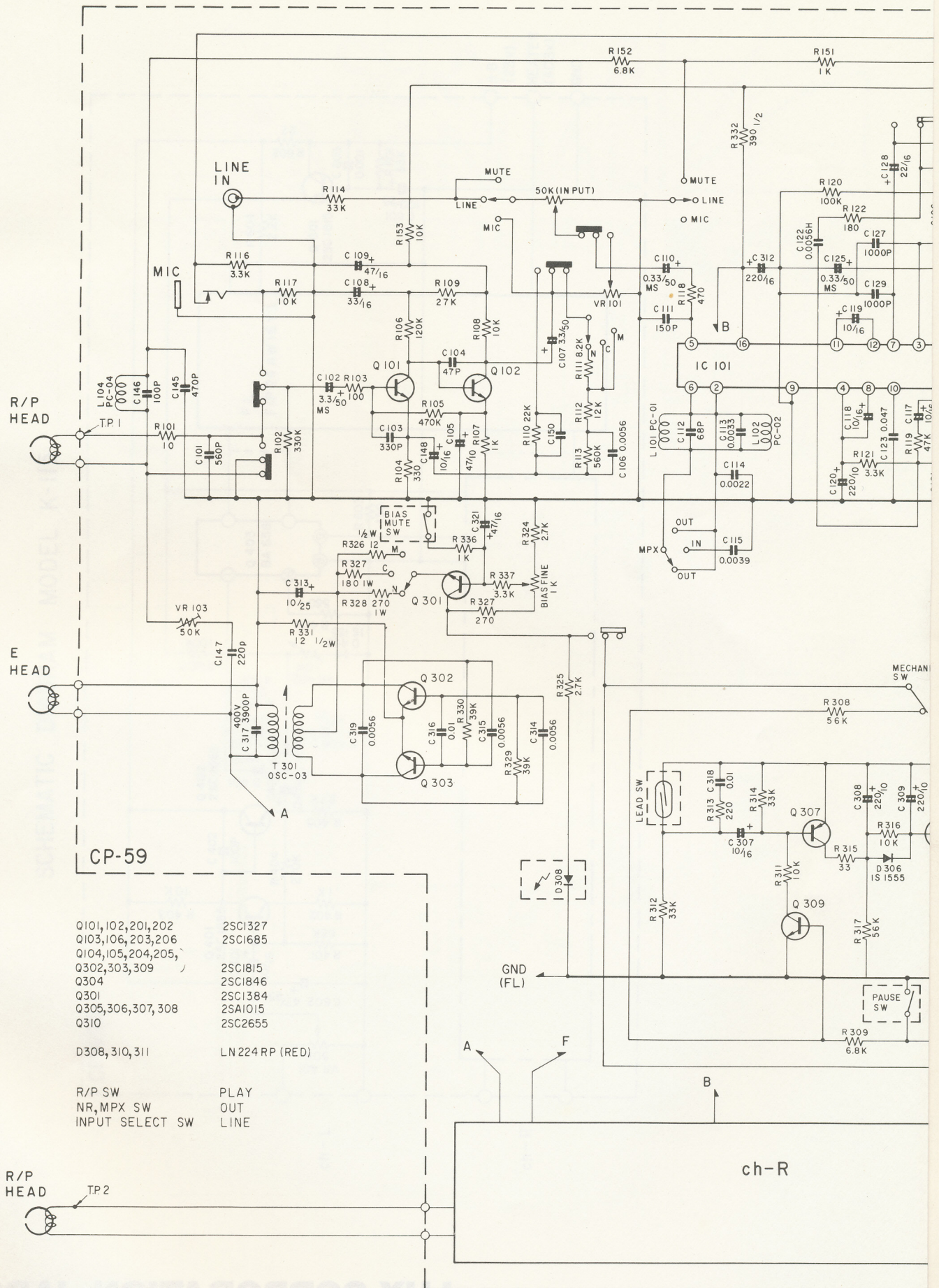
Dolby is a trademark of Dolby Laboratories, Inc.



SCHEMATIC DIAGRAM MODEL K-115



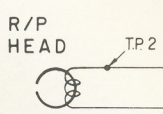
# SCHEMATIC DIAGRAM



- |                      |         |
|----------------------|---------|
| Q101, 102, 201, 202  | 2SC1327 |
| Q103, 106, 203, 206  | 2SC1685 |
| Q104, 105, 204, 205, |         |
| Q302, 303, 309       | 2SC1815 |
| Q304                 | 2SC1846 |
| Q301                 | 2SC1384 |
| Q305, 306, 307, 308  | 2SA1015 |
| Q310                 | 2SC2655 |

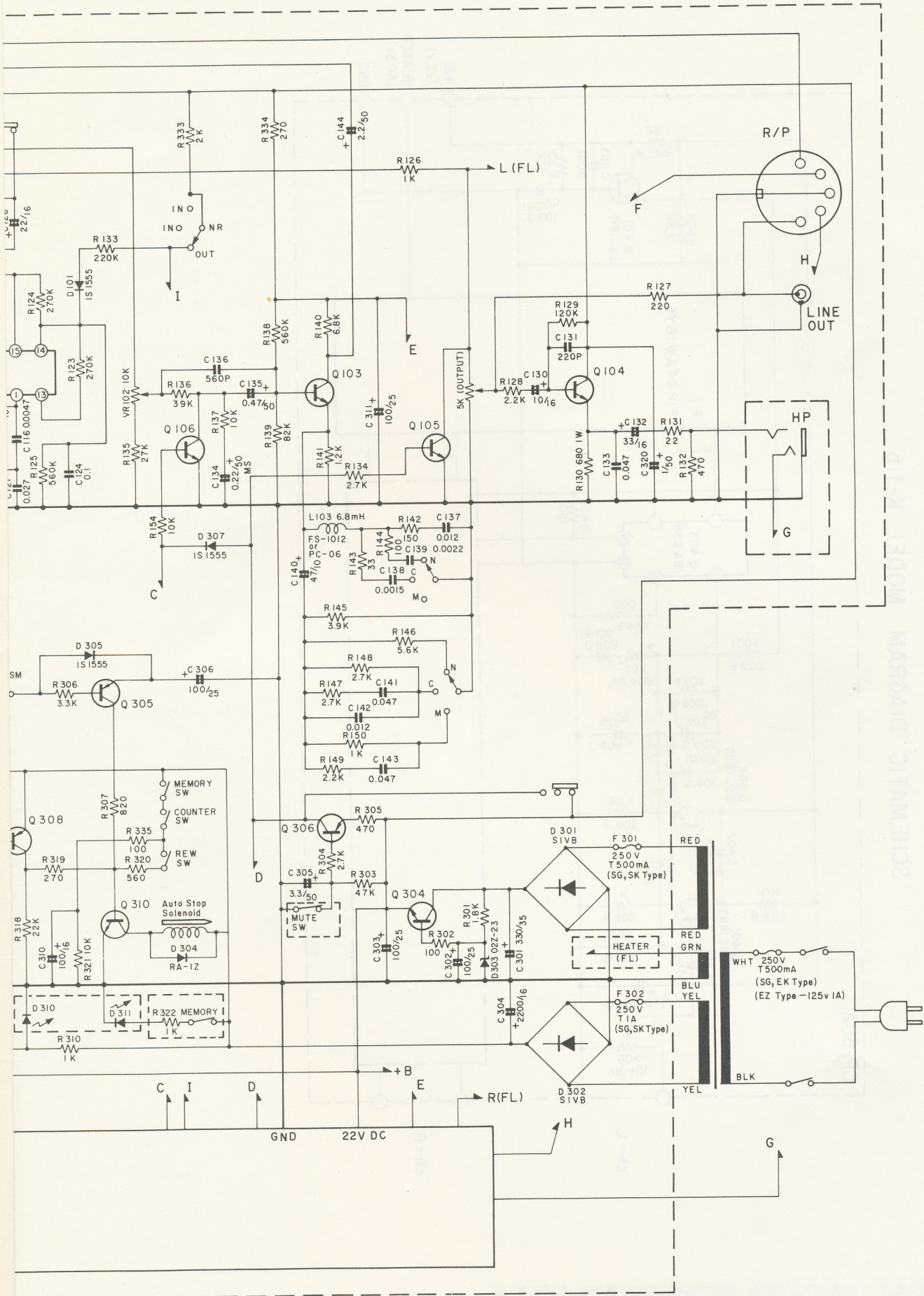
D308, 310, 311      LN224 RP (RED)

R/P SW                  PLAY  
 NR, MPX SW        OUT  
 INPUT SELECT SW    LINE

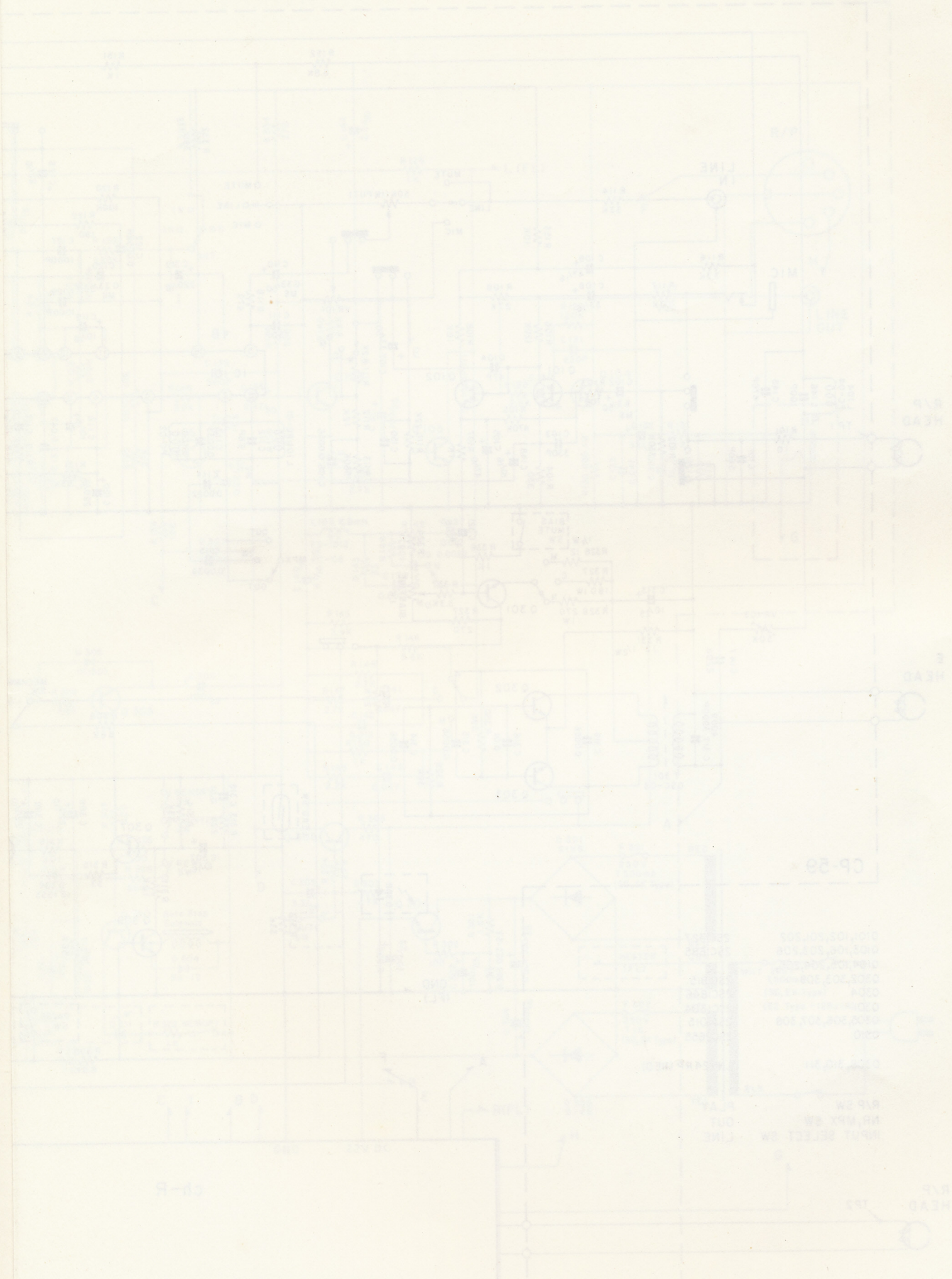


LUX CORPORATION, JAPAN  
 1-1 CHOME SHINGENMITSUOCHI, TOKYO 104, JAPAN  
 TEL. 03-824-0004 FAX. 03-824-0005

# MODEL K-115



SCHEMATIC DIAGRAM



**LUX CORPORATION, JAPAN**

1-1, 1-CHOME, SHINSENRI-NISHIMACHI, TOYONAKA-SHI, OSAKA  
PHONES: 06-834-0004 CABLE: LUXMAN TOYONAKA TELEX: J63694